



FLUVIAL  
ARCHIVES  
GROUP



**Fluvial Archives Group**

**Polish Association for Environmental Archaeology**

**Department of Geomorphology, Geoarchaeology  
and Environmental Management,  
Institute of Geography,  
The Jan Kochanowski University in Kielce**

**FLAG Biennial Meeting 2016**

***“Evolution of river valleys in Central Europe”***

**Kielce-Suchedniów (Poland)**

**12-18.09.2016**

**Biennial Meeting**  
**to be held in Kielce-Suchedniów, Poland**  
**on September 12-18, 2016**  
**Preliminary registration: January 31, 2016**

**Final registration with abstract submission:**  
**May 31, 2016**

**E-mail: [flag2016.kielce@gmail.com](mailto:flag2016.kielce@gmail.com)**

**Website: [www.flag2016suchedniow.pev.pl](http://www.flag2016suchedniow.pev.pl)**  
**(in progress)**

## **GENERAL INFO**

### **CONFERENCE TOPICS**

- Long term evolution of fluvial systems
- Fluvial system response to forcing (climate, tectonics, anthropogenic)
- Event based and time-integrated approaches of fluvial systems
- Geomorphological studies in European valleys (local studies and regional overviews) – the Quaternary evolution
- Holocene to historical evolution of fluvial systems
- Human-environment interaction in the river valleys recorded in different palaeo-archives.
- Alluvial geoarchaeology, palaeohydrology and paleopedology
- Natural hazards in river valleys
- Methodological approaches to unravel fluvial system evolution (including dating and modelling)

**Final program may be modified upon abstracts submission**

## Conference venue:

### **Hotel Świętokrzyski**

**ul. Słowackiego 1,**

**26-130 Suchedniów k. Kielc**

**www.hotelswietokrzyski.pl**

**Tel./fax. /48/ 41 25 45 341**

**E-mail: [hotel@dendron.pl](mailto:hotel@dendron.pl)**



## Hotel accommodation

**Hotel Świętokrzyski in single, double, tripple rooms**

**Price for all rooms: about €30/day per person**

**cover night and meals (breakfast, lunch, dinner)**

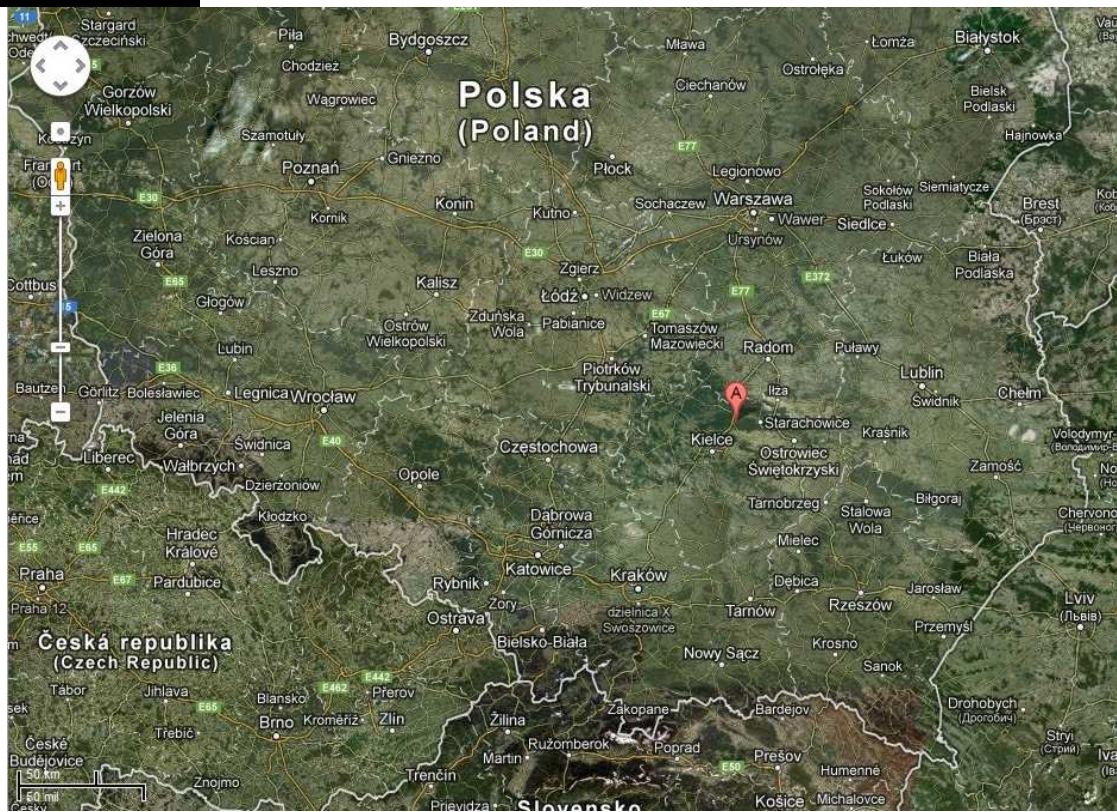
**Payment at registration desk (check in) in hotel**

*Participants not accommodated in the Hotel Świętokrzyski can cover cost of meals (lunch, dinner etc.) at reception desk.*

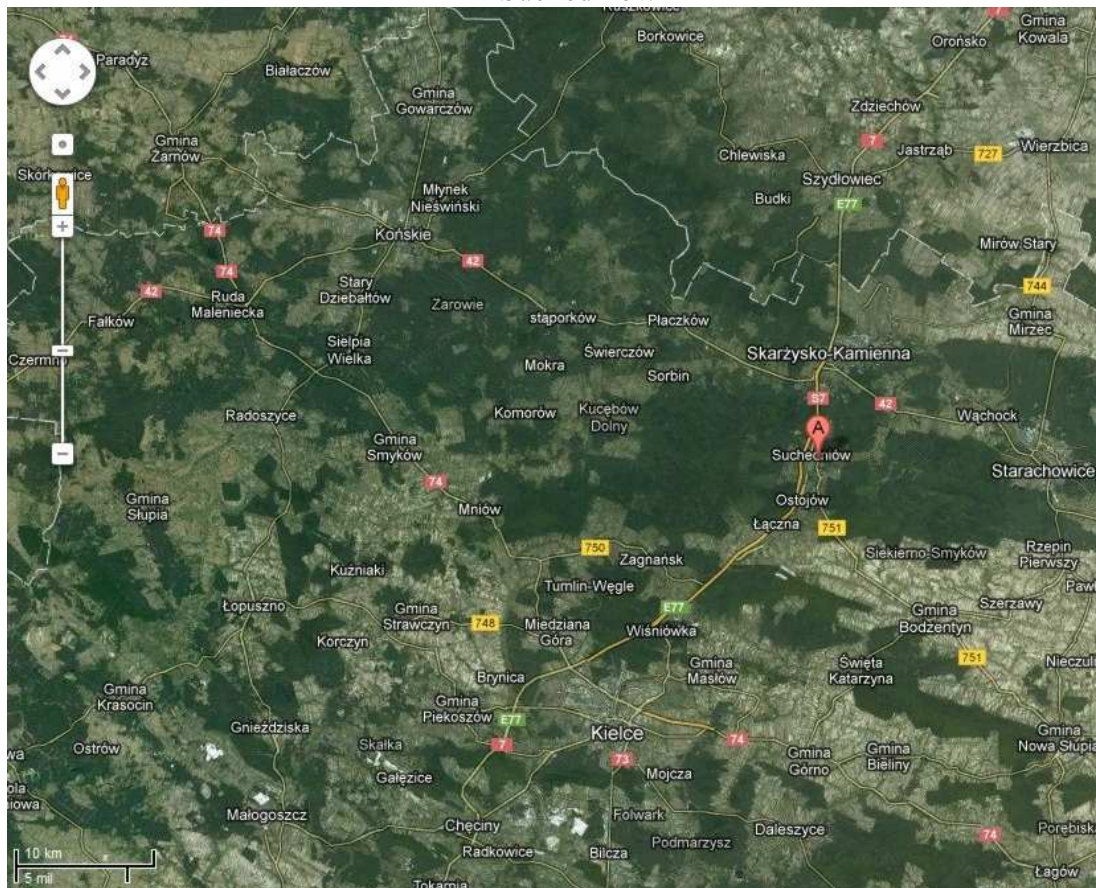
**There are some hotels and hostels in Suchedniów, Skarżysko-Kamienna and Kielce, which may be booked directly or via tourist agencies.**



# Location

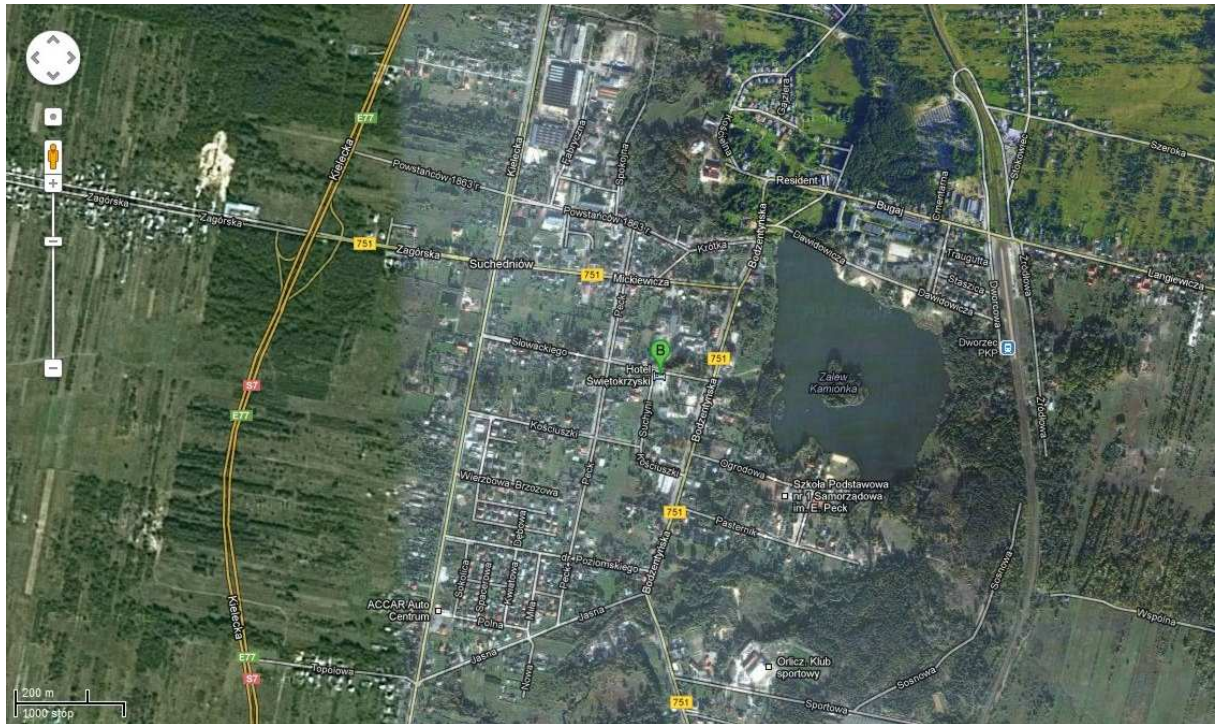


Poland  
A - Suchedniów





## Holy Cross Mountains A - Suchedniów



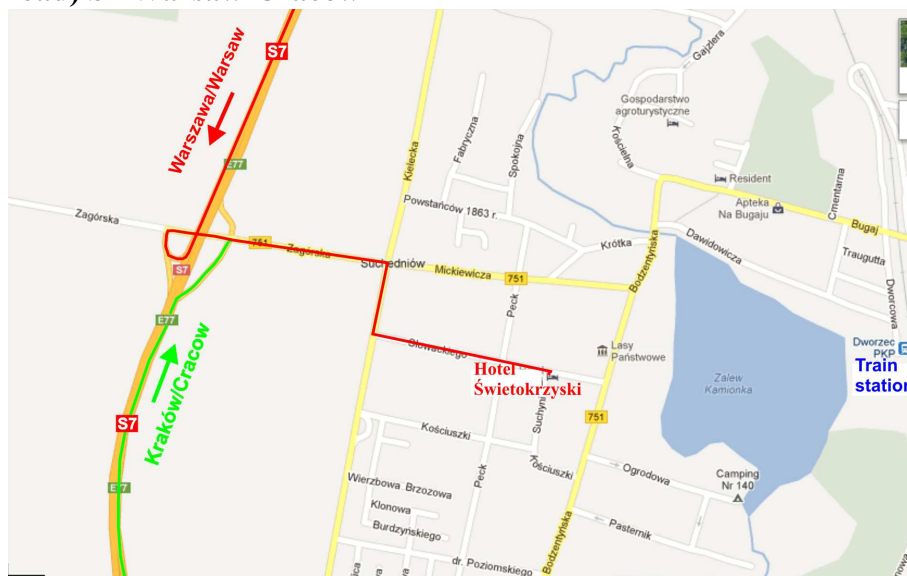
Suchedniów  
B – Hotel Świątokrzyski

## Arrival

### By plane

International airports are located in Warsaw and Cracow.

**By car (about 150 km from Warsaw or from Krakow (Cracow) by main road (speed road) S7 Warsaw-Cracow**



**By bus** (ticket price about 10-15 euro)

Some regular buses per day from Cracow or Warsaw pass and stop in the Suchedniów  
Regular lines of minibuses from Kielce (25 km to S) - (ticket price about 2 euro)

**By train** (ticket price about 10-15 euro)

Direct train from Warszawa Centralna/ Warsaw main station to Suchedniów

4-5 trains per day

Direct train from Kraków Główny/Cracow main station to Suchedniów:

4-5 trains per day

In case of any question or if you need transfer from train station in Suchedniów or in Kielce to the Hotel please contact organizers [zgks@ujk.edu.pl](mailto:zgks@ujk.edu.pl)

**Official language: English.**

# **SCHEDULE**

## **12.09.2016 Monday - First day**

- **arrival to Suchedniów, hotel check-in, conference registration;**
- **plenary and oral sessions**
- **ice-break party**

### **Presentation**

**Plenary session** (30 min + 10 min discussion)

**Oral presentations** (20 min + 5 min discussion)

**Posters (size A0-A1)** (5 min explanation)

## **13.09.2016 Tuesday - Second day**

- **oral and poster sessions**
- **conference dinner**

## **14.09.2016 Wednesday - Third day**

### **Field excursion: “River valley evolution on Oder-Wartha glaciations area”**

Suchedniów – Działoszyn (gap section of Warta river) – Belchatów (overview of Quaternary sedimentation and stratigraphy on Polish Plain) – Lutomiersk (Prehistoric settlement complex in Ner river valley, Early Holocene flood events) – Koźmin (subfossil riparian forest from Alleröd-Younger Dryas) –Suchedniów



Koźmin



## **15.09.2016 Thursday - Fourth day**

### **Field excursion: “River valley evolution of Middle Mountain and Upland area”**

Suchedniów – Kazimierz Dolny (Medieval old city, gap section of the Vistula river – Quaternary evolution, loess erosional landscape) – Chodelka (Late Glacial and Holocene evolution of gap section) – Krzemionki Opatowskie (Neolithic flint mines) – Suchedniów



Kazimierz Dolny



Krzemionki Opatowskie

## **16-17.09.2016 Friday-Saturday–Fifth-Sixth day**

### **Field excursion “River valley evolution of Upland and Subcarpathian Basin”**

Suchedniów – Skarżysko Kamienna (evolution of Holy Cross Mountain river valleys: Kamienna and Kamionka river valleys, natural and anthropogenic factors) - Stąporków (Vistulian and Holocene evolution of Czarna valley) - (Chęciny (Medieval castle, geological and geomorphological regional overview) – Ostrów (Late Glacial and Holocene evolution of Czarna Nida valley) – Suchedniów



Kamienna Valley (Subatlantic subfossil trees)



Czarna valley (oxbow lake fill)





Chęciny Castle



Czarna Nida valley (anastomosing palaeochannels)

**Suchedniów – Witów (Tertiary/Quaternary alluvial deposits (molasa) in Subcarpathian Basin) – Niepołomice (old city, Medieval castle, Late Glacial and Holocene evolution of the upper Vistula river valley) – Cracow**



Atlantic palaeomeanders of Vistula River in Subcarpathian Basin (niepołomice Forest)



Niepołomice – castle



Kraków – Main Square

**Sunday – possibility to make individual sightseeing of Cracow (Krakow) city and region of Cracow (Ojców National Park, Auschwitz etc.)**

# **COSTS**

## **Registration fee:**

- **regular €250**
- **for PhD students and students €150**

**will cover abstract book, field excursions, ice-break party, conference dinner, coffee breaks.**

**Registration fee should be pay with final registration and it is non-refundable (details will be in second circular).**

### **Account number:**

PKO BP SA Oddział 2 w Poznaniu  
Kościuszki str. 80A  
61-715 Poznań

Konto: **Stowarzyszenie Archeologii Środowiskowej**  
**ul. Dzięgielowa 27**  
**61-680 Poznań**

### **For Polish participants**

Nr rachunku: 21 1020 4027 0000 1402 0430 0448  
z dopiskiem w treści (opisie) wpłaty: **FLAG Nazwisko** (BARDZO WAŻNE I NIEZBĘDNE!)

### **for other participants**

**SWIFT: PPKOPLPW**

**Nr IBAN: PL 21 1020 4027 0000 1402 0430 0448**

with postscript: **FLAG Name** (VERY IMPORTANT!)

**Late fee (after May 31, 2016): €300 at registration desk**

## **IMPORTANT DATES**

**January 31, 2016 Preliminary registration**

**February 2016 Second circular with preliminary program of symposium**

**May 31, 2016 Final registration, abstract submission, payment of registration fee**

**June 2016 Third Circular and conference program (for registered participants)**

## **CONTACTS**

**E-mail: [flag2016.kielce@gmail.com](mailto:flag2016.kielce@gmail.com)**

**Website: [www.flag2016suchedniow.pev.pl](http://www.flag2016suchedniow.pev.pl)**

Please watch at the NEWS section on the conference website from time to time.

**Chairman of Organizing Committee  
Prof. UJK dr hab. Tomasz Kalicki**